

FOUNDED IN 1952

**EXECUTIVE COMMITTEE  
OF THE FEDERATION**

**PRESIDENT**

Polly Ward

**CHAIRMAN**

Steve Twining

**VICE PRESIDENTS**

Patti Negri

Desmond McDonald

Joan Luchs

**EXECUTIVE SECRETARY**

Marilyn Stefano

**TREASURER**

Fritz Zeiser

**MEMBER ASSOCIATIONS**

BelAir Knolls

BelAir Skycrest

Benedict Canyon

Beverly Crest

Beverly Glen Park

Briarcliff

Cahuenga Pass

Neighborhood

CANDER

Encino Property

Forest Hills

Franklin Hills

Franklin/Hwd.Blvd.West

Friends of Caballero

Glassell Park

Glenridge

Highland's Owners

Hollywood Dell

Hollywood Heights

Hollywoodland

Holmby Hills

Homeowners of Encino

Laurel Canyon

Los Feliz Improvement

Montecito Heights

Mt. Olympus

Mount Washington

Nichols Canyon

No.Beverly Dr/Franklin

Outpost

Pacific Palisades

Residents of Beverly Glen

Roscomare Valley

Sherman Oaks

Studio City

Tarzana

Torreyson-Flynn

Upper Mandeville

Whitley Heights

**CHAIRMEN EMERITUS**

Jerome C. Daniel

Patricia Bell Hearst

Gordon Murley

**CHAIRMAN IN  
MEMORIUM**

Brian Moore

**PRESIDENT'S LETTER**

**COUNCILMAN GREIG SMITH'S BLUE-  
PRINT ON TRASH MANAGEMENT**

I have attended several presentations made by the Councilman on a new proposal on trash management, and am totally convinced that it is time to change the way LA views trash.

Enlightened cities around the world no longer are looking at trash as something to be dumped, but as a resource to be used for economic benefit. They actively reduce refuse and maximize their reuse and recycling opportunities, convert what's left to beneficial use as alternative fuels, renewable green energy, soils amendments and feedstocks for manufacturing processes.

As Councilman Smith states, "The time has come for Los Angeles to take the lead and forge a path to move beyond the 200-year-old environmentally damaging system of landfilling - to a new paradigm of reuse and zero waste." He calls this RENEW LA.

Councilman Smith has already identified locations for a waste management facility in the West Valley and the Glendale area.

I suggest that we, as a Federation, place our united resources behind his efforts, and become a leader in this new paradigm.

Expect to hear much more about this, and see representatives of this plan at our meetings in 2006.

**SHOULD WE OPEN OUR MEMBERSHIP  
TO HOMEOWNER ASSOCIATIONS IN  
MOUNTAIN AREAS OTHER THAN THE  
SANTA MONICAS?**

Obviously, other mountain areas in the LA basin are suffering from the pressures for development as are the Santa Monicas. In fact, the pressures are more extreme in the

The mission of the Hillside Federation shall be:

To protect the property and the quality of life of residents of the Santa Monica Mountains and other hillside areas of Los Angeles and its environs, and to encourage and promote those policies and programs which will best preserve the natural topography and wildlife of the mountains and hillsides for the benefit of all the people of Los Angeles.

**NEXT MEETING**

**Wednesday, DECEMBER 7 2005 -  
8:00pm**

**!!NEW MEETING PLACE!!**

**TREE PEOPLE**

**Corner Mulholland Drive &  
Coldwater Canyon  
Studio City**

**AGENDA**

- \* Introduction of Members and Guests
- \* Minutes of November Meeting to be Approved
- \* Question: Should Membership in Hillside Fed be extended to other hillside orgs?
- \* Developments - Mountaingate, Canyon Back Trail
- \* Discussion: Cnclmn Greig Smith's Resource Mngmnt Blueprint for LA
  - \* Reports: President  
Chairman  
Vice Presidents  
Treasurer
- \* Old and New Business

Verdugos and the San Gabriels, since there is more open land left. Homeowner groups from these areas are approaching us for assistance and support, which we gladly supply. The question is whether we would like to expand our vision and membership, as we assist in the entire County basin?

Please think about this, and be prepared to discuss at our December meeting, when we'll have a little pre-Christmas celebration.

**POLLY WARD, President**

**MOUNTAINGATE PROJECT**

The following information has been summarized from the Upper Mandeville Canyon (UMCA) Property Owners Assn. newsletter "Canyon Echoes". The information in parenthesis is added editorial

comment by President Polly Ward.

"The LA City Planning Commission held a public hearing on the Mountaingate (Castle & Cooke) 29-home development project in Mountaingate without requiring Castle & Cooke to establish a funding mechanism for maintaining hundreds of acres of hillside brush properties. This inexplicable failure to assure maintenance funding threatens to expose (the) community to significant wildfire and hillside stability risks.

The plan calls for the construction of 29 homes, above the eastern slope of Upper Mandeville Canyon. The 1978 Mandeville fire spread from the Mountaingate area down this brush-filled hillside into Mandeville Canyon. And the same steep, unstable hillside has been the source of repeated flood damages suffered by the community. Yet the Planning Commission leaves (them) vulnerable to fire and flood risks by failing to require a long-term source of funding for brush clearance and hillside stability maintenance.

In order to obtain certain tax benefits, Castle & Cooke has sought to "dedicate" the Open Space property to a public agency. However, no public agency has accepted the developer's offer because the land imposes substantial maintenance costs - including brush-clearance responsibilities, hillside-maintenance costs, flood-revetment clearing, and other erosion control costs.

The Planning Commission failed to assure that, before the project is developed, a stable funding source is established for the Open Space property. Instead, the maintenance responsibility will remain with "Castle & Cooke Mountaingate, Inc.," which could be terminated after completion of the final phase. The likely result - Nobody will maintain the steep, brush-

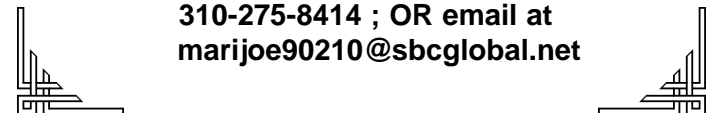


## NEWSLETTER

Editor/Publisher **MARILYN STEFANO**

**HEY! Is anyone reading this beside Claire Carafello & Alan Fine? What's happening? 'Sup?** What's going on in your neighborhoods? I feel like the mother whose children don't call anymore - isn't anyone interested in spreading the word about great (or awful) news in their neighborhoods? We want a Newsletter that keeps us informed about what's happening (let's have some fun stuff, too). Please PLEASE send us stuff - we appreciate being in the know.- or now - or no? Articles might be subject to some editing for grammar or syntax, if needed - NOT for content - though I doubt it will happen! Fax a hard copy 2 weeks before the next meeting to

**310-275-8414 ; OR email at  
marijoe90210@sbcglobal.net**



filled, and unstable hillside slopes above Upper Mandeville Canyon."

(The Santa Monica Mountains Conservancy was offered the open-space area below the development and turned it down - Wonder why?)

The UMCA, along with Canyon Back Alliance, is appealing the Planning Commission's failure to require an EIR addressing this significant issue.

## CANYONBACK TRAIL

The following has also been taken from the UMCA "Canyon Echoes".

"First, the trail alignment has never been specified. No maps have ever made clear precisely where the trail will be located. This allows the opportunity to degrade the historic scenic ridgeline alignment. It also raises the risk that the trail entrance will be located so close to the proposed private street as to inhibit public use of the trail.

Second, the Planning Commission allows the developer to constrict the trail's usable space to just 5 feet wide, thereby creating safety risks for trail users along a very steep section of the trail. Thus, the Planning Commission rejected the deputy's recommendation for a true 10-foot trail, and ignored the

### FEDERATION'S WEBSITE UP AND RUNNING

The Federation's new website is  
[www.hillsidecanyon.org](http://www.hillsidecanyon.org)

Please take a look at it, and if there's something else you'd like to see on it, or if you want to send in an article to the Newsletter, we'd love to hear from you. Call Steve Twining at (310) 472-6091 to give your suggestions.

objections of Council District 11, the Santa Monica Mountains Conservancy (SMMC) and all members of the public who addressed the issue at the hearing.

The Commission also failed to require a conservation easement to the SMMC. The UMCA has appealed the failure to require Castle & Cooke to grant a conservation easement to protect the Open Space property."

## MT. ST. MARY'S TRAIL

The Planning Commission approved developer Castle & Cooke's plan to forever terminate public access along the Mt. St. Mary's (MSM) Trail. The public has used the trail since at least the 1950s, and probably long before then.

But that long-standing public use came to an abrupt end in August 2005, when Castle & Cooke gated-off the section of the trail running through its Stoney Hill development site. This significant adverse impact on public use of the MSM has never been considered in an EIR, in violation of CEQA. UMCA and Canyonback Alliance have appealed this erroneous termination.

---

We regretfully announce that our Friend and Long-time Board Member, HELEN ITRIA NORMAN, passed away on November 14, 2005.

Helen attended USC, worked at Look Magazine writing short stories, and worked for many years as a freelance journalist. Helen served as President of the Hollywood Women's Press Club, and of their Scholarship Foundation. She also served as President of the Tarzana Property Owners Association, and annually organized the TPOA Town Hall meetings with local candidates and politicians. A great dream was realized when the Tarzana Community and Cultural Center opened in 2001. The Tarzana Community Center Foundation continues her work.

Donations in her memory may be sent to TreePeople, 12601 Mulholland Drive, Beverly Hills, CA 90210.

## CITY ALLIANCE OF NEIGHBORHOOD COUNCILS

The City Alliance of Neighborhood Councils, at their November meeting, presented two main speakers - Senator Richard Alarcon and Councilman Greig Smith.

Senator Alarcon said that Neighborhood Councils (NCs) were created to give back a sense of community to neighborhoods, and are all about neighbors working together. NCs were supposed to have limited planning authority and should not be excluded from discussions on community. He suggested that they should have more budget authority (up to \$1 million dollars) and should address a menu of services.

Alarcon also suggested that NCs should take the lead in asking that smaller schools be built.

Councilman Greig Smith stated that for 200 years we have been throwing our trash in our canyons. For the past 40 years Europe has built 170 recycling plants and Japan has built 70. There, trash is looked at as a resource to be recycled and to generate electricity. Five technologies have been identified to deal with trash, such as removing and recycling gas, using pyrolysis to create charcoal, creation of compost and mulch, gasification (used for energy), and production of electricity from green sources. There are two European companies who are willing to give us the technology at no charge, which could be put on DWP land.

Smith said that AB 1090 will change definitions so that new technologies will be specifically allowed, and will redefine diversion credits. We need to let state officials know we support this bill.

Important to the success of this will be teaching our populations to sort our trash - at this time, 20% of trash is not properly sorted.

## LETTER SENT TO CITY PLANNING COMMISSION - NOV.11, 2005

Re: Proposed Draft Oak Tree Ordinance CPC-2004-2290-CA

Dear Commissioners:

The Federation of Hillside and Canyon Associations,

Inc. endorses the draft Ordinance as presented by the Cahuenga Pass Neighborhood Assn. This includes enlarging the protection of Oak trees to include Sycamores, Black Walnut and Calif. Bay trees, and that the Ordinance pertain to all properties no matter the size of the properties.

We thank all who have been involved in the drafting of the Ordinance, and hope for speedy passage and enforcement.

Sincerely,  
Polly Ward, President

## **BRUSH FIRES**

Major factors contributing to a brush fire are the absence of a comprehensive brush clearance program, the prevalence of combustible wood-shingle roofs, the absence of emergency evacuation plans, and a disorganized evacuation.

The recent Sylmar Fire is offered as a contrast. A potentially devastating brush fire was contained before firefighters even arrived on the scene. Brush clearance created a zone of protected or defensible space that allowed firefighters to enter the residential area safely, move to the outer perimeter, away from the homes, to contain the brush fire.

In one fire after another in the Southern California area, residents and firefighters sing the same tune: Brush clearance programs are the key to success in saving lives and property.

"Shelter in place" means to stay inside your home rather than evacuation. Evacuation may be an option well before a firestorm has arrived in the area. But last minute evacuations, occurring while a fire is bearing down on the Canyon, are not safe. If a wild-fire is in the area, and you are not urged to evacuate by the authorities, you should assess that shelter in place is the appropriate response. Cars are less safe than a house because they offer far less shelter and because of the gasoline in the tank.

Things to do: Dress appropriately. Wear long sleeves, sturdy shoes and have dust masks available. A first-aid kit, flashlight, cell phone, and water are essential. Keep the family together in the house. Close windows and doors. Leave curtains open and lights on. This will signal fire department personnel that you are inside the residence. Move all flammable materials outside your home into the house or

garage.

Fill your trash cans with water ahead of the firestorm's arrival. If you have a pool, a pool pump with sufficient hose to cover your property can be extremely effective. Mop up small fires and embers on your property after the fire passes.

## **JUST IN TIME FOR HOLIDAY SHOPPING**

**from JOAN LUCHS**

**Subject: Safety for Women**

We can now add to the list of victims the retired 77 yr. old TCU professor from Ft Worth whose body was found last week in Oklahoma and the 11 yr. Old in Sarasota, FL. Because of these recent abductions in daylight hours, refresh yourself of these things to do in an emergency situation. This is for you, and for you to share with your friends, your wife, your children, everyone you know and care about. It never hurts to be careful in this crazy world we live in.

**1. Tip from Tae Kwon Do: The elbow is the strongest point on your body. If you are close enough to use it, do!**

**2. Learned this from a tourist guide in New Orleans. If a robber asks for your wallet and/or purse, DO NOT HAND IT TO HIM. Toss it away from you. chances are that he is more interested in your wallet and/or purse than you, and he will go for the wallet/purse. RUN LIKE MAD IN THE OTHER DIRECTION!**

**3. If you are ever thrown into the trunk of a car, kick out the back tail lights and stick your arm out the hole and start waving like crazy. The driver won't see you, but everybody else will. This has saved lives.**

**4. Women have a tendency to get into their cars after shopping, eating, working, etc., and just sit (doing their checkbook, or making a list, etc. DON'T DO THIS!) The predator will be watching you, and this is the perfect opportunity for him to get in on the passenger side, put a gun to your head, and tell you where to go. AS SOON AS YOU GET INTO YOUR CAR, LOCK THE DOORS AND LEAVE.**

**a. If someone is in the car with a gun to your head DO NOT DRIVE OFF, repeat: DO NOT DRIVE OFF! Instead gun the engine and speed into anything, wrecking the car. Your Air Bag will save you. If the person is in the back seat they will get the worst of it. As soon as the car crashes bail out and run. It is better than having them find your body in a remote location.**

5. A few notes about getting into your car in a parking lot, or parking garage:

**A.)** Be aware: look around you, look into your car, at the passenger side floor, and in the back seat

**B.)** If you are parked next to a big van, enter your car from the passenger door. Most serial killers attack their victims by pulling them into their vans while the women are attempting to get into their cars.

**C.)** Look at the car parked on the driver's side of your vehicle, and the passenger side. If a male is sitting alone in the seat nearest your car, you may want to walk back into the mall, or work, and get a guard/policeman to walk you back out. **IT IS ALWAYS BETTER TO BE SAFE THAN SORRY.** (And better paranoid than dead.)

6. ALWAYS take the elevator instead of the stairs. (Stairwells are horrible places to be alone and the perfect crime spot. This is especially true at NIGHT!)

7. If the predator has a gun and you are not under his control, ALWAYS RUN! The predator will only hit you (a running target) 4 in 100 times; And even then, it most likely WILL NOT be a vital organ. RUN, Preferably in a zig-zag pattern!

8. As women, we are always trying to be sympathetic: STOP. It may get you raped, or killed. Ted Bundy, the serial killer, was a good-looking, well educated man, who ALWAYS played on the sympathies of unsuspecting women. He walked with a cane, or a limp, and often asked for help into his vehicle or with his vehicle, which is when he abducted his next victim.

9. Another Safety Point: Someone just told me that her friend heard a crying baby on her porch the night before last, and she called the police because it was late and she thought it was weird. The police told her "Whatever you do, DO NOT open the door." The lady then said that it sounded like the baby had crawled near a window, and she was worried that it would crawl to the street and get run over. The policeman said, "We already have a unit on the way, whatever you do, DO NOT open the door." He told her that they think a serial killer has a baby's cry recorded and uses it to coax women out of their homes thinking that someone dropped off a baby. He said they have not verified it, but have had several calls by women saying that they hear baby's cries outside their doors when they're home alone at night.

Please pass this on and DO NOT open the door for a crying baby. This message should probably be taken seriously because the Crying Baby theory was

mentioned on America's Most Wanted recently when they profiled the serial killer in Louisiana.

I'd like you to forward this to all the women you know. It may save a life.

A candle is not dimmed by lighting another candle. I was going to send this to the ladies only, but guys, if you love your mothers, wives, sisters, daughters, etc., you may want to pass it onto them, as well.

Send this to any woman you know that may need to be reminded that the world we live in has a lot of crazies in it and it's better to be safe than sorry.

Shannon LaForge  
Courtroom Deputy to Judge Robert Junell  
U.S. District Court

## BEL AIR BEVERLY CREST NC OFFICE

Chairman STEVE TWINING, also President of the above Neighborhood Council, advises that if you are interested in attending any Neighborhood Council meetings, please contact STEVE TWINING at the Council office: 310-479-6247, Fax: 310-479-0458, 1525 S. Sepulveda Blvd., #5. The office is open Mon. & Wed., 9am-6pm, and Fri. 9am-1pm.

## REMINDERS: ISSUES & PETITIONS

Federation meetings are scheduled to start at 8:00 pm, and end at 10:00pm and, in order to end on time, an **OUTLINE OF ISSUES & PETITIONS** to be brought before the Board should be mailed to: Pres. POLLY WARD at P.O.Box 1041, Studio City, CA 91614 or faxed to: (818) 761-4065, 48 hours before the scheduled meeting.

**MOTIONS** to be made at the meeting should be thought out beforehand, and put into writing so that they are clear and concise. **EACH SPEAKER** will be allowed 5 minutes to make his/her presentation, so that meetings can be kept on time.

## **MULHOLLAND SCENIC PARKWAY DESIGN REVIEW BOARD**

MARVIN BRAUDE SAN FERNANDO  
CONSTITUENTS SERVICE CENTER  
6262 Van Nuys Blvd., Van Nuys  
Date: the 1st & 3rd Thursdays of the month  
Time: 6:30pm